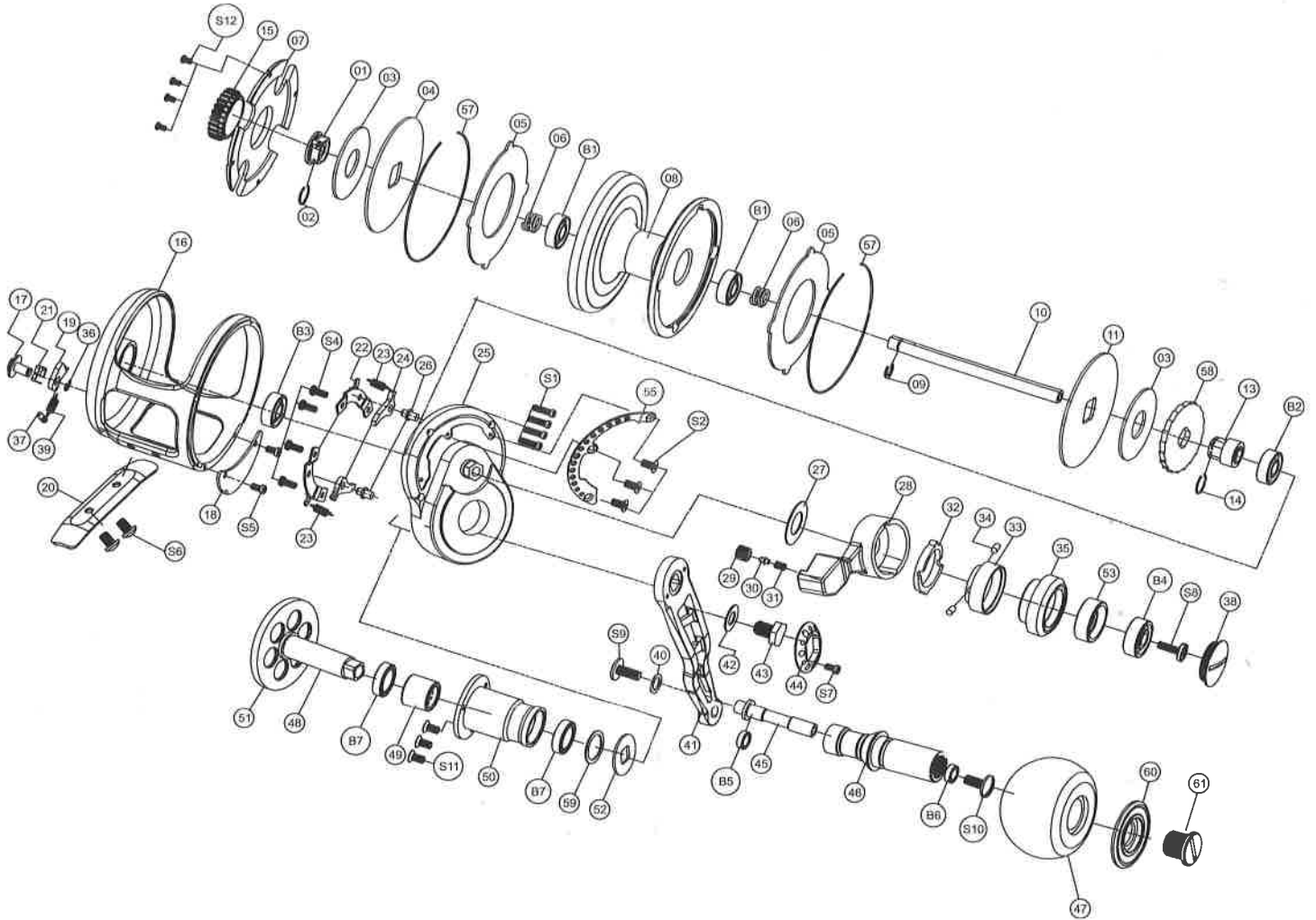




Musha 武者 205HL

ENGINEERED BY CHIMUSHIHOKU

EXPLODED VIEW



No.	Parts Name	No.	Parts Name	No.	Parts Name
1	Pin Holder	28	Drag Level	55	Embedded Clip
2	Pin (A)	29	Sound Coat	57	Spool Ring
3	Washer	30	Sound Nail	58	Anti-Reverse Ratchet
4	Rear Drag Plate	31	Sound Nail Spring	59	Handle Washer
5	Carbon Drag Washer	32	Pre-Program Plate	60	Handle Fixing Cover
6	Spool Shaft Spring	33	Pre-Program Key	61	Handle Fixing Screw
7	Cover	34	Pre-Program Keypin	B1	Ball Bearing 1
8	Spool	35	Drag Cam	B2	Ball Bearing 2
9	E Click	36	E Click	B3	Ball Bearing 3
10	Drive Shaft (A)	37	Alarm Pin	B4	Ball Bearing 4
11	Front Drag Plate	38	Drag Cam Cover	B5	Ball Bearing 5
13	Pinion Gear	39	Alarm Spring	B6	Ball Bearing 6
14	Pin (B)	40	Washer (A)	B7	Ball Bearing 7
15	Click Gear	41	Handle	S1	Right Side Cover Screw
16	Frame	42	Handle Nut Washer	S2	Embedded Clip Screw
17	Click Button	43	Handle Nut	S4	Set Plate Screw
18	Plate	44	Handle Nut Plate	S5	Plate Screw
19	Click Pawl	45	T Handle Shaft	S6	Reel Foot Screw
20	Reel Foot	46	Handle Shaft Coat	S7	Screw (A)
21	Click Button Spring	47	Handle EVA Knob	S8	Drive Shaft Screw
22	Plate	48	Drive Shaft (B)	S9	Screw (B)
23	Spring	49	One-Way Bearing	S10	Screw (C)
24	Anti-Reverse Pawl	50	Drive Shaft Coat	S11	Screw (D)
25	Right Side Cover	51	Drive Gear	S12	Screw (E)
26	Nail	52	Washer (B)		
27	Drag Level Washer	53	Collar		